

Certificate of Conformity

- (1)
- (2) Equipment and Protective Systems Intended for Use in Potentially Explosive Atmospheres – **Directive 2014/34/EU**

- (3) Certificate Number:

EPS 14 ATEX 1 638 X

Revision 5

- (4) Equipment: Power Supply (built-in):
QS40.241*, QS40.361*, QS40.481*, QS40.244-A1, QS40.484-A1
(*optional with suffix "-C1" or "-C2")

- (5) Manufacturer: PULS GmbH

- (6) Address: Elektrastr. 6
81925 München
Germany

- (7) This equipment and any acceptable variation thereto are specified in the schedule to this Certificate of Conformity and the documents therein referred to.

- (8) Bureau Veritas Consumer Products Services Germany GmbH certifies based on a voluntary assessment that this equipment has been found to comply with the Essential Health and Safety Requirements relating to the design and construction of equipment and protective systems intended for use in potentially explosive atmospheres, given in Annex II of the Directive 2014/34/EU. The examination and test results are recorded in the confidential documentation under the reference number 14TH0029.

- (9) Compliance with the Essential Health and Safety Requirements has been assured by compliance with:

EN IEC 60079-0:2018


EN 60079-7:2015 + A1:2018

EN 60079-15:2010

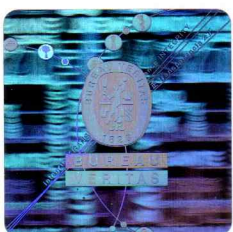
- (10) If the sign "X" is placed after the certificate number, it indicates that the equipment is subject to special conditions for safe use specified in the schedule to this certificate.

- (11) This Certificate of Conformity relates only to the design and the construction of the specified equipment in accordance with Directive 2014/34/EU. Further requirements of this Directive apply to the manufacture and supply of this equipment. Those requirements are not covered by this certificate.

- (12) The marking of the equipment shall include the following:

 II 3G Ex ec nC IIC T3 Gc
II 3G Ex ec nC IIC T4 Gc

T3: QS40.361, QS40.481
T4: QS40.241, QS40.244-A1, QS40.484-A1



Certification department of explosion protection

Hamburg, 2021-07-08

Holger Schaffer

Page 1 of 3

Certificates without signature and seal are void. This certificate is allowed to be distributed only if not modified. Extracts or modifications must be authorized by Bureau Veritas Consumer Products Services Germany GmbH. EPS 14 ATEX 1 638 X, Revision 5.

(13) **Annexe**

(14) **Certificate of Conformity EPS 14 ATEX 1 638 X**

Revision 5

(15) Description of equipment:

The equipment under test is the QS40.xxx power supply series consisting of units with an AC 100-240V wide-range input and regional units with an AC 200-240V input. The power supplies are intended for universal use. QS40.241, QS40.361, QS40.481 only: optional suffix "-C1" stands for coating of the printed circuit board; no safety relevance.

Revision 1:

Method of marking changed from adhesive label to laser marking. New type labels added. Additional standard EN 60079-0/A11:2013. Alternate Inductor L2; due to the nature of change no additional testing deemed necessary. Formal correction in list of manufacturer's documents.

Revision 2:

Extension of ambient temperature range from +60 °C to +70 °C. No additional testing required, test results for +70 °C were already included in the previous report (informative).

Revision 3: (ATEX Revision 4)

Update to current version of standards. Update to current version of ExTR. Change of type of protection from "nA" to "ec". Change of Manufacturers address to "Elektrastr. 6, 81925 München, Germany ". Minor editorial changes.

Revision 4: (ATEX Revision 5)

Addition of additional suffix concerning protective coating. No safety relevant changes.

Electrical data:

<p><u>QS40.241</u> Input: AC 100-240 V, 11.2-4.6 A, 50-60 Hz Output: DC 24-28 V, 40-34.3 A (below +60 °C) DC 24-28 V, 30-25.7 A (at +70 °C)</p>	<p><u>QS40.361</u> Input: AC 100-240 V, 11.2-4.6 A, 50-60 Hz Output: DC 36-42 V, 26.7-22.9 A (below +60 °C) DC 36-42 V, 20-17.2 A (at +70 °C)</p>
<p><u>QS40.481</u> Input: AC 100-240 V, 11.2-4.6 A, 50-60 Hz Output: DC 48-54 V, 20-17.8 A (below +60 °C) DC 48-54 V, 15-13.4 A (at +70 °C)</p>	<p><u>QS40.244-A1</u> Input: AC 200-240 V, 5.4 A, 50-60 Hz Output: DC 24-28 V, 40-34.3 A (below +60 °C) DC 24-28 V, 30-25.7 A (at +70 °C)</p>
<p><u>QS40.484-A1</u> Input: AC 200-240 V, 5.4 A, 50-60 Hz Output: DC 48-54 V, 20-17.8 A (below +60 °C) DC 48-54 V, 15-13.3 A (at +70 °C)</p>	
<p>All models: Derate linearly between +60 °C and +70 °C *optional with suffix "-C1" or "-C2" -C1 completely coated with protective coating -C2 partly coated with protective coating</p>	



(16) **Certificate of Conformity EPS 14 ATEX 1 638 X**

Revision 5

(17) Reference number: 14TH0029

(18) Schedule of Limitations:

- The equipment shall be installed in an enclosure that provides a minimum ingress protection of IP 54 in accordance with EN 60079-0.
- The equipment shall only be used in an area of not more than pollution degree 2, as defined in EN 60664-1.
- Output power de-rating conditions according to manufacturer's instructions must be considered for operation at ambient temperature > +60 °C.

(19) Essential health and safety requirements:

Met by standards.

Certification department of explosion protection

Hamburg, 2021-07-08



Holger Schaffer